

ADMIRALTY

INLET

SKUNK

BAY

GOVERNMENT LOT 7  
PATENT DATE 6/25/66  
Vol 1 Pg 245

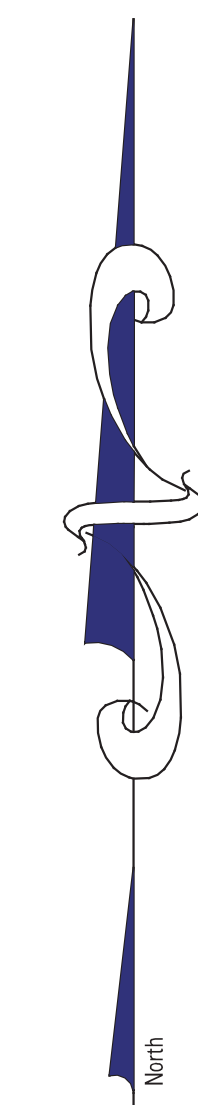
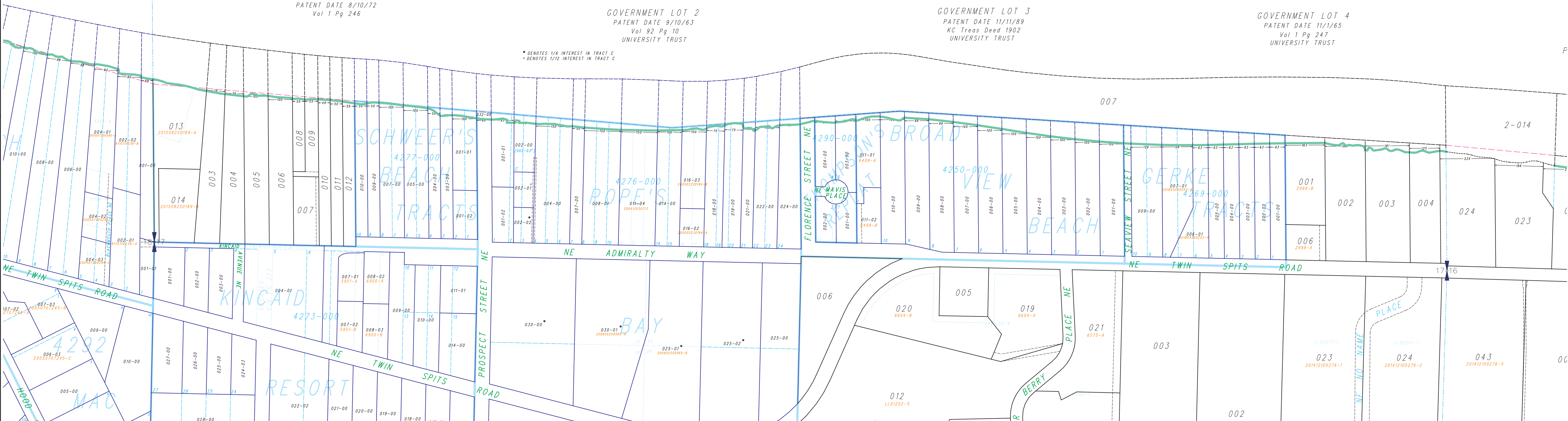
GOVERNMENT LOT 1  
PATENT DATE 8/10/72  
Vol 1 Pg 246

GOVERNMENT LOT 2  
PATENT DATE 9/10/63  
Vol 92 Pg 10  
UNIVERSITY TRUST

GOVERNMENT LOT 3  
PATENT DATE 11/11/89  
KC Treas Deed 1902  
UNIVERSITY TRUST

GOVERNMENT LOT 4  
PATENT DATE 11/1/65  
Vol 1 Pg 247  
UNIVERSITY TRUST

\* DENOTES 1/4 INTEREST IN TRACT C  
\* DENOTES 1/12 INTEREST IN TRACT C



LEGEND	
	UNPLATTED TAX LOT BOUNDARY
	PLATTED TAX LOT BOUNDARY
	SUPPRESSED TAX LOT BOUNDARY
	PLAT LOT BOUNDARY
	SUPPRESSED PLAT LOT BOUNDARY
	EASEMENT BOUNDARY
	LITTORAL LOT BOUNDARIES
	PLAT BOUNDARY SHORELINE
	CREEK
	WET AREA
	UNPLATTED TAX LOT NUMBER
	AUXILIARY UNPLATTED LOT NUMBER
	PLATTED TAX LOT NUMBER
	AUXILIARY PLATTED TAX LOT NUMBER
	SHORT PLAT & LOT DESIGNATOR
	SUPPRESSED
	PLAT & BLOCK NUMBER
	PLAT LOT NUMBER

This map was compiled for the Kitsap County Assessor as a record of existing tax lots, for tax assessment purposes only. It is not a survey map.

# North 1/2 Section 17-28-2E

Scale: 1 = 200'  
February 14, 2025

Map Number **B17N**

