

ADMIRALTY

GOVERNMENT LOT 4
PATENT DATE 11/11/89
Reel 42 Fr 390
STATE SCHOOL LAND

INLET

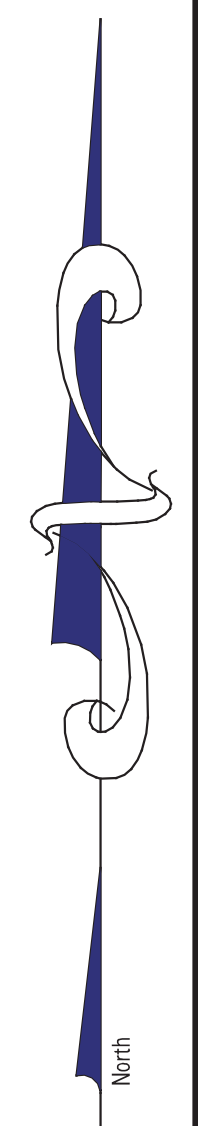
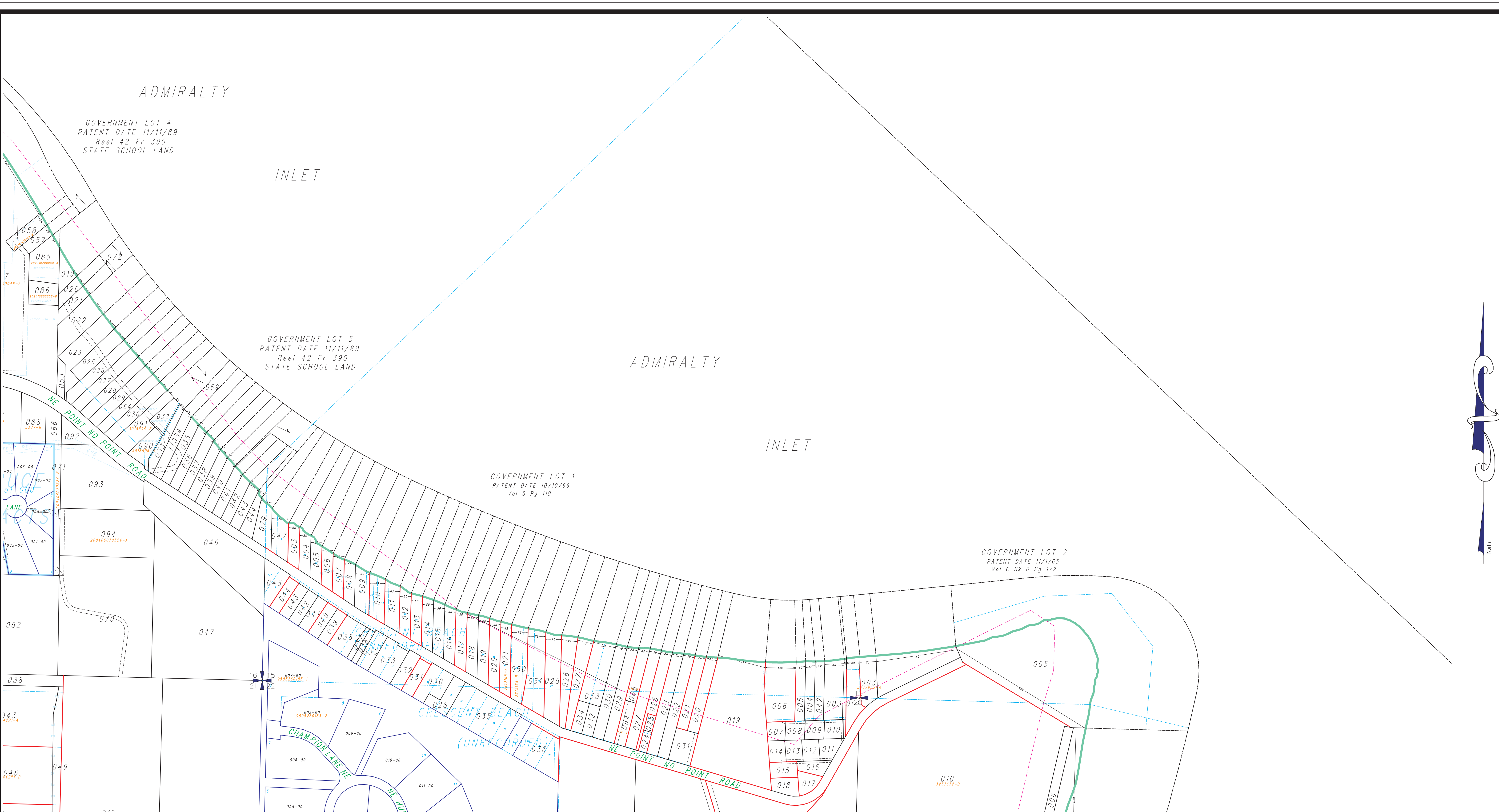
GOVERNMENT LOT 5
PATENT DATE 11/11/89
Reel 42 Fr 390
STATE SCHOOL LAND

ADMIRALTY

INLET

GOVERNMENT LOT 1
PATENT DATE 10/10/66
Vol 5 Pg 119

GOVERNMENT LOT 2
PATENT DATE 11/1/65
Vol C Bk D Pg 172



LEGEND	
	UNPLATTED TAX LOT BOUNDARY
	PLATTED TAX LOT BOUNDARY
	SURVEYED TAX LOT BOUNDARY
	PLAT LOT BOUNDARY
	SUPERSEDED PLAT LOT BOUNDARY
	EASEMENT BOUNDARY
	LITTORAL LOT BOUNDARIES
	PLAT BOUNDARY
	SHORELINE
	CREEK
	WET AREA
	UNPLATTED TAX LOT NUMBER
	AUXILIARY UNPLATTED LOT NUMBER
	PLATTED TAX LOT NUMBER
	AUXILIARY PLATTED TAX LOT NUMBER
	SHORT PLAT & LOT DESIGNATOR
	SUPERSEDED
	PLAT & BLOCK NUMBER
	PLAT LOT NUMBER

This map was compiled for the Kitsap County Assessor as a record of existing tax lots, for tax assessment purposes only. It is not a survey map.

South 1/2 Section 15-28-2E

Scale: 1 = 200'
February 14, 2025

Map Number **B15S**

