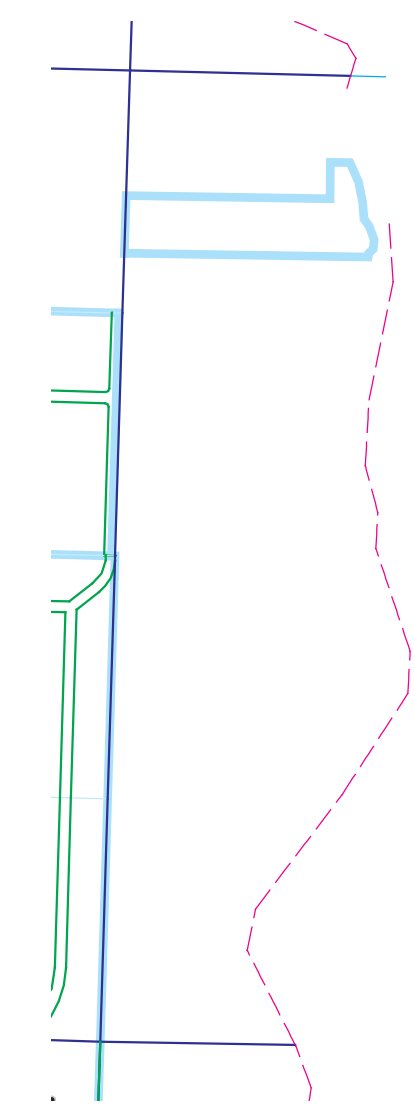


SOUND

**LEGEND**

UNPLATTED TAX LOT BOUNDARY	006	UNPLATTED TAX LOT NUMBER
PLATTED TAX LOT BOUNDARY	(006-21)	AUXILIARY UNPLATTED LOT NUMBER
SUPERSEDED TAX LOT BOUNDARY	012-00	PLATTED TAX LOT NUMBER
PLAT LOT BOUNDARY	(012-00)	AUXILIARY PLATTED TAX LOT NUMBER
SUPERSEDED PLAT LOT BOUNDARY	008-00	SHORT PLAT LOT IDENTIFIATOR
EASEMENT BOUNDARY	008-00	SUPERSEDED
LITIGIAL LOT BOUNDARIES	4042-001	PLAT BLOCK NUMBER
PLAT BOUNDARY		PLAT LOT NUMBER
ENCROACHMENT		
CREEK		
NET AREA		

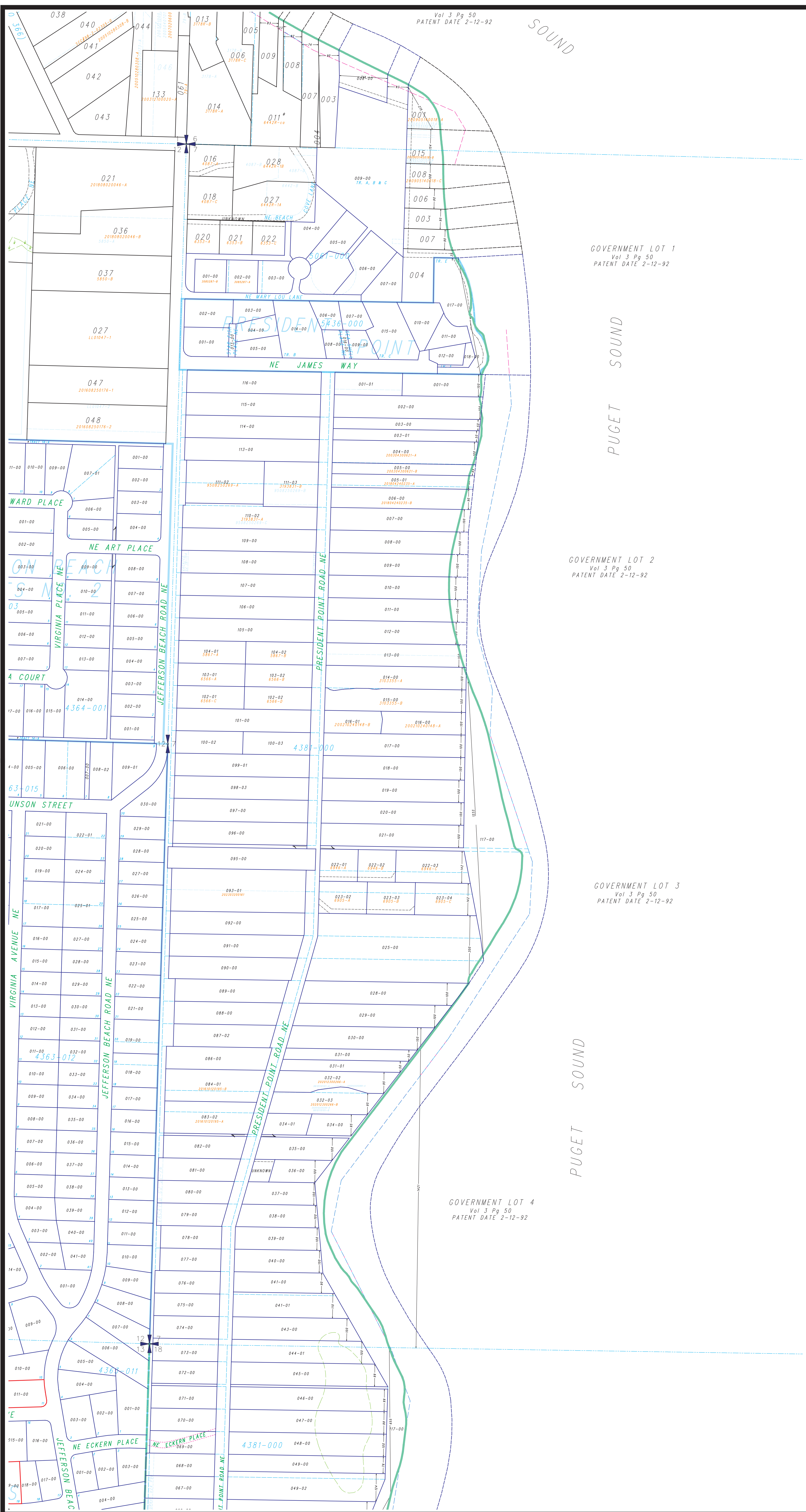
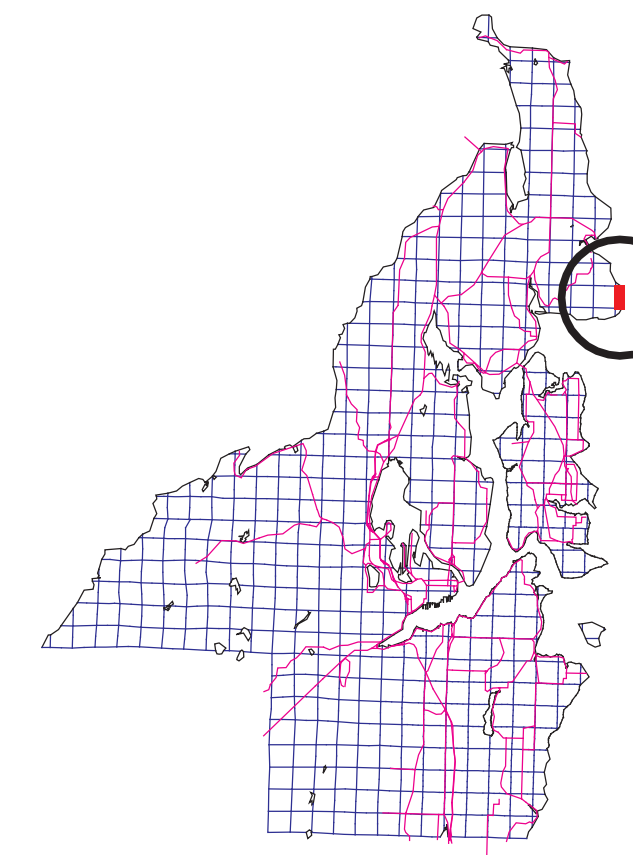
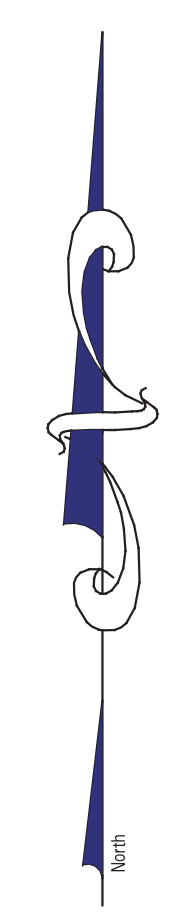
This map was compiled for the Kitsap County Assessor as a record of existing tax lots, for tax assessment purposes only. It is not a survey map.



**West 1/2  
Section 07-26-3E**

Scale: 1 = 200'  
February 14, 2025

Map Number **H07W**



GOVERNMENT LOT 1  
Vol 3 Pg 50  
PATENT DATE 2-12-92

PUGET SOUND

GOVERNMENT LOT 2  
Vol 3 Pg 50  
PATENT DATE 2-12-92

PUGET SOUND

GOVERNMENT LOT 3  
Vol 3 Pg 50  
PATENT DATE 2-12-92

GOVERNMENT LOT 4  
Vol 3 Pg 50  
PATENT DATE 2-12-92