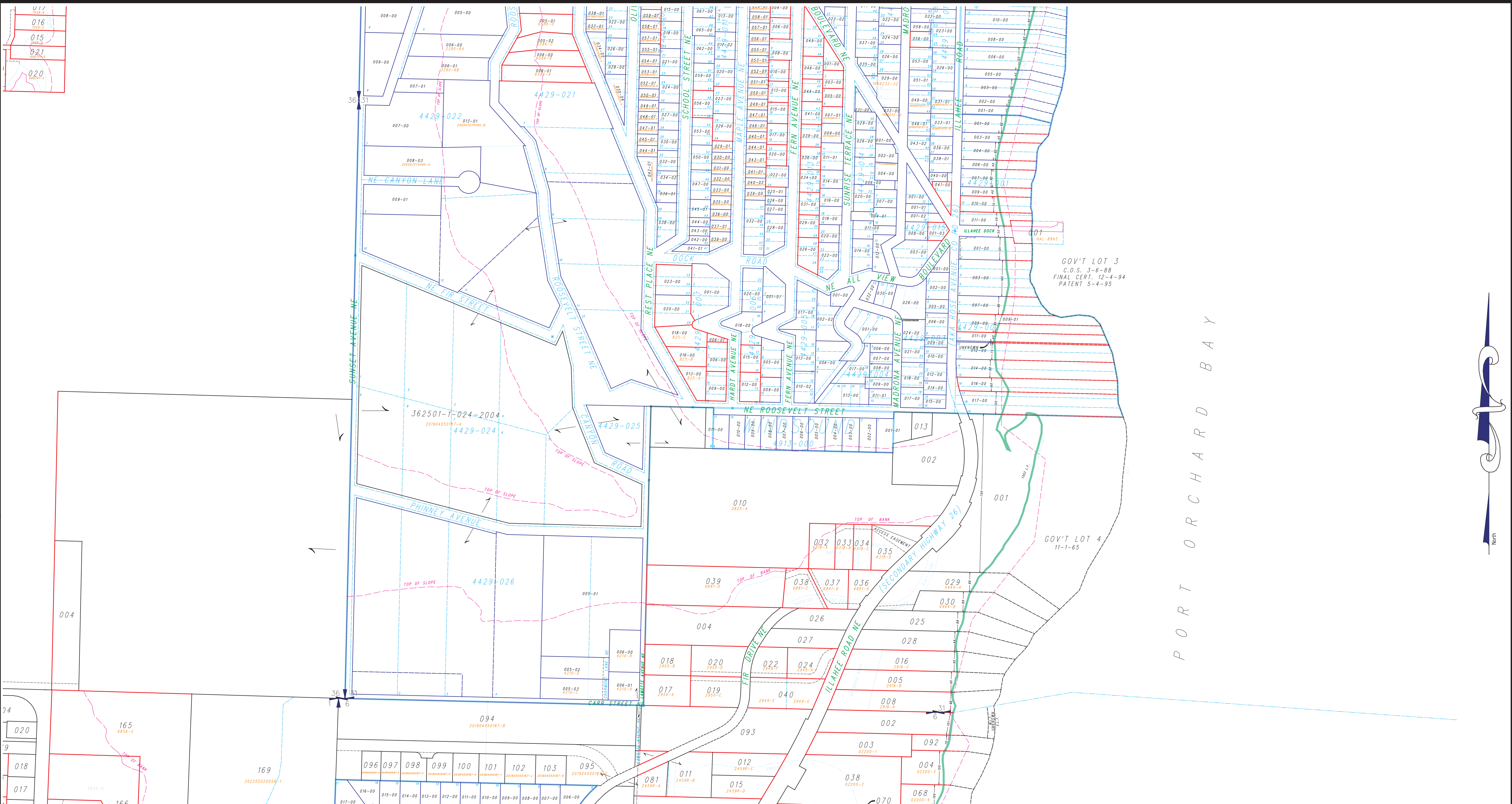


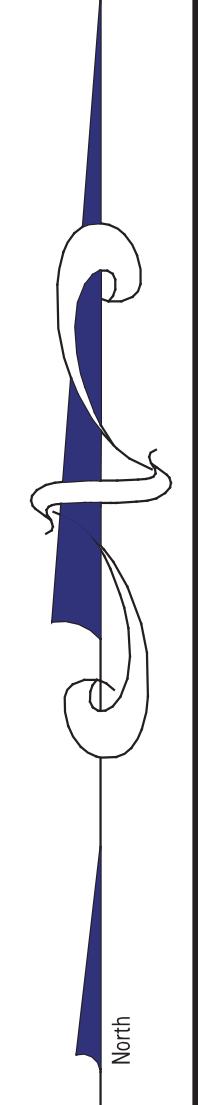
017  
016  
015  
021  
020



GOV'T LOT 3  
C.O.S. 3-6-88  
FINAL CERT. 12-4-94  
PATENT 5-4-95

GOV'T LOT 4  
11-1-65

PORT ORCHARD BAY



LEGEND	
	UNPLATTED TAX LOT BOUNDARY
	PLATTED TAX LOT BOUNDARY
	SURVEYED TAX LOT BOUNDARY
	PLAT LOT BOUNDARY
	SUPERSUED PLAT LOT BOUNDARY
	EASEMENT BOUNDARY
	LITTORAL LOT BOUNDARIES
	PLAT BOUNDARY
	SHORELINE
	CREEK
	WET AREA
	UNPLATTED TAX LOT NUMBER
	AUXILIARY UNPLATTED LOT NUMBER
	PLATTED TAX LOT NUMBER
	AUXILIARY PLATTED TAX LOT NUMBER
	SHORT PLAT & LOT DESIGNATOR SUPERSUED
	PLAT & BLOCK NUMBER
	PLAT LOT NUMBER

This map was compiled for the Kitsap County Assessor as a record of existing tax lots, for tax assessment purposes only. It is not a survey map.

# South 1/2 Section 31-25-2E

Scale: 1 = 200'  
January 13, 2025

Map Number **M31S**

