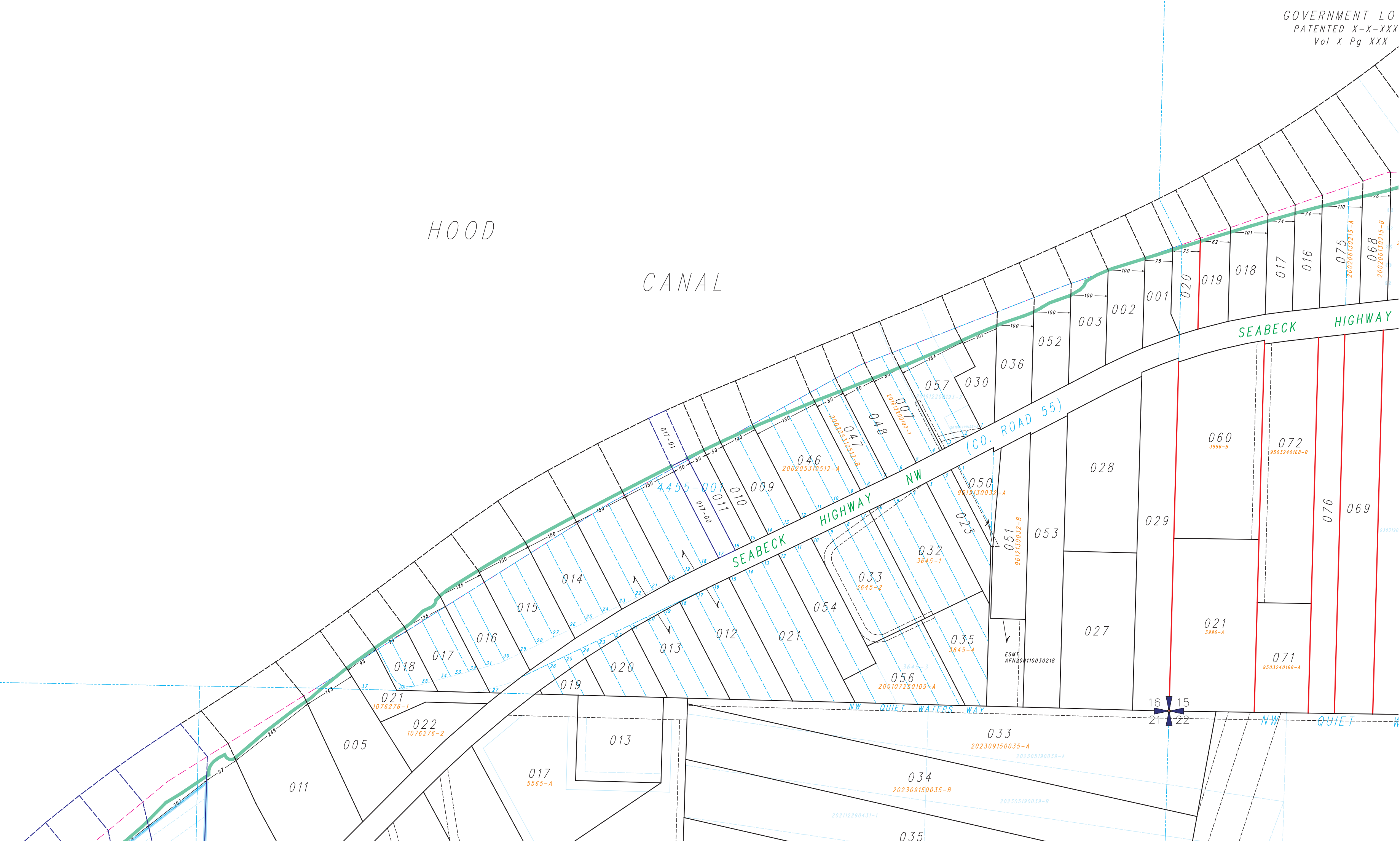


GOVERNMENT LO  
PATENTED X-X-XXX  
Vol X Pg XXX



LEGEND	
	UNPLATTED TAX LOT NUMBER
	PLATTED TAX LOT NUMBER
	AUXILIARY UNPLATTED LOT NUMBER
	AUXILIARY PLATTED TAX LOT NUMBER
	SHORT PLAT & LOT DESIGNATOR
	SUPERSEDED
	PLAT & BLOCK NUMBER
	PLAT LOT NUMBER

This map was compiled for the Kitsap County Assessor as a record of existing tax lots, for tax assessment purposes only. It is not a survey map.

# South 1/2 Section 16-25-1W

Scale: 1 = 200'  
October 27, 2023

Map Number **K16S**

