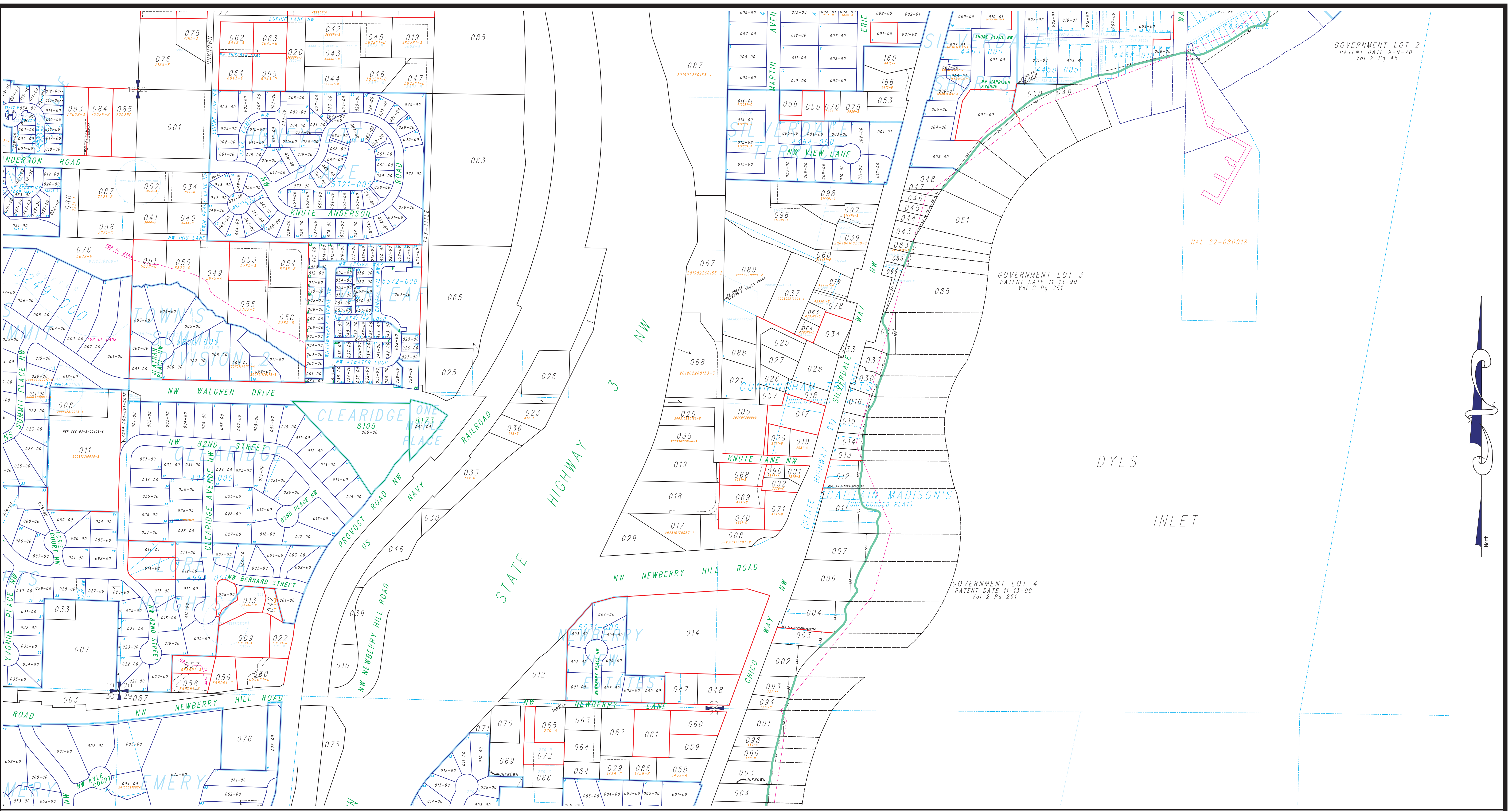


GOVERNMENT LOT 2  
PATENT DATE 9-9-70  
Vol 2 Pg 46

GOVERNMENT LOT 3  
PATENT DATE 11-13-90  
Vol 2 Pg 251

GOVERNMENT LOT 4  
PATENT DATE 11-13-90  
Vol 2 Pg 251

HAL 22-080018



LEGEND	
	UNPLATTED TAX LOT BOUNDARY
	PLATTED TAX LOT BOUNDARY
	SUBDIVIDED TAX LOT BOUNDARY
	PLAT LOT BOUNDARY
	SUPERSEDED PLAT LOT BOUNDARY
	AUXILIARY PLATTED TAX LOT BOUNDARY
	EASEMENT BOUNDARY
	LITIGIAL LOT BOUNDARIES
	PLAT BOUNDARY
	SHORELINE
	CREEK
	WET AREA
	006 UNPLATTED TAX LOT NUMBER
	006-21 AUXILIARY UNPLATTED LOT NUMBER
	012-00 PLATTED TAX LOT NUMBER
	012-01 AUXILIARY PLATTED TAX LOT NUMBER
	418-A SHORT PLAT & LOT DESIGNATOR SUPERSEDED
	4042-001 PLAT & BLOCK NUMBER
	12 PLAT LOT NUMBER

This map was compiled for the Kitsap County Assessor as a record of existing tax lots, for tax assessment purposes only. It is not a survey map.

# South 1/2 Section 20-25-1E

Scale: 1 = 200'  
September 25, 2024

## Map Number L20S

