

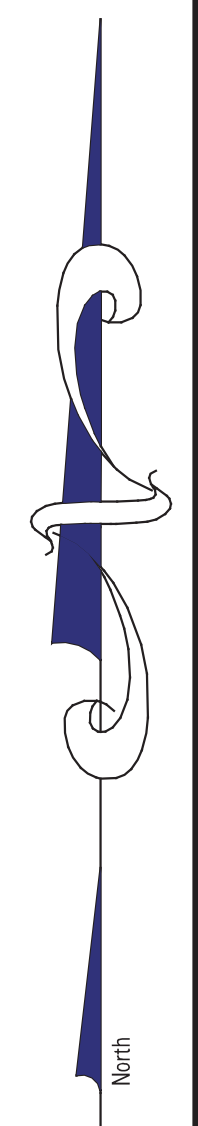
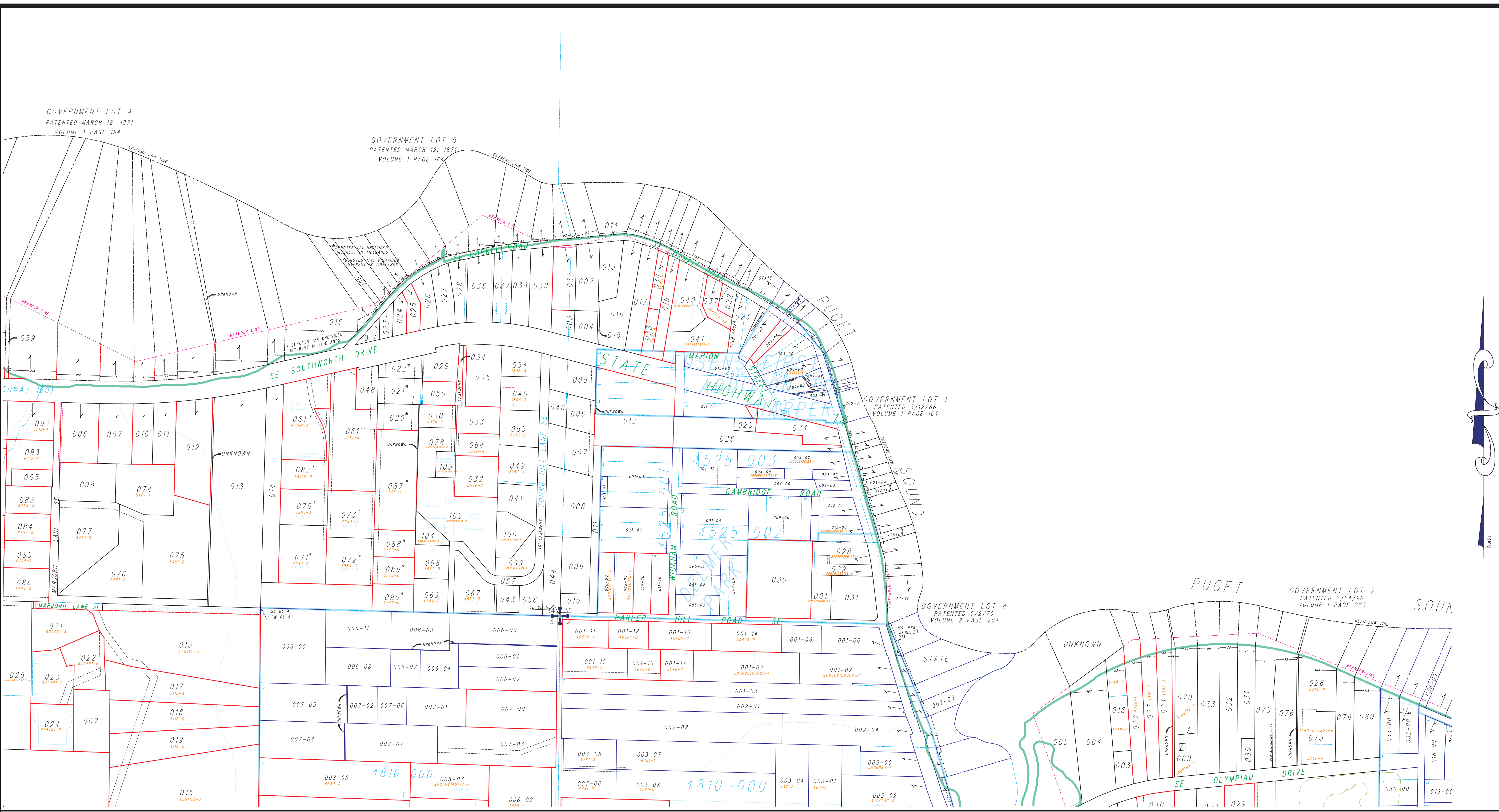
GOVERNMENT LOT 4
PATENTED MARCH 12, 1871
VOLUME 1 PAGE 164

GOVERNMENT LOT 5
PATENTED MARCH 12, 1871
VOLUME 1 PAGE 164

GOVERNMENT LOT 1
PATENTED 3/12/88
VOLUME 1 PAGE 164

GOVERNMENT LOT 4
PATENTED 5/2/70
VOLUME 2 PAGE 204

GOVERNMENT LOT 2
PATENTED 2/24/90
VOLUME 1 PAGE 223



LEGEND	
	UNPLATTED TAX LOT BOUNDARY
	PLATTED TAX LOT BOUNDARY
	SURVEYED TAX LOT BOUNDARY
	PLAT LOT BOUNDARY
	SUPERSEDED PLAT LOT BOUNDARY
	EASEMENT BOUNDARY
	LITTORAL LOT BOUNDARIES
	PLAT BOUNDARY SHORELINE
	CREEK
	WET AREA
	UNPLATTED TAX LOT NUMBER
	AUXILIARY UNPLATTED LOT NUMBER
	PLATTED TAX LOT NUMBER
	AUXILIARY PLATTED TAX LOT NUMBER
	SHORT PLAT & LOT DESIGNATOR SUPERSEDED
	PLAT & BLOCK NUMBER
	PLAT LOT NUMBER

This map was compiled for the Kitsap County Assessor as a record of existing tax lots, for tax assessment purposes only. It is not a survey map.

South 1/2 Section 35-24-2E

Scale: 1 = 200'
July 31, 2020

Map Number **S35S**

