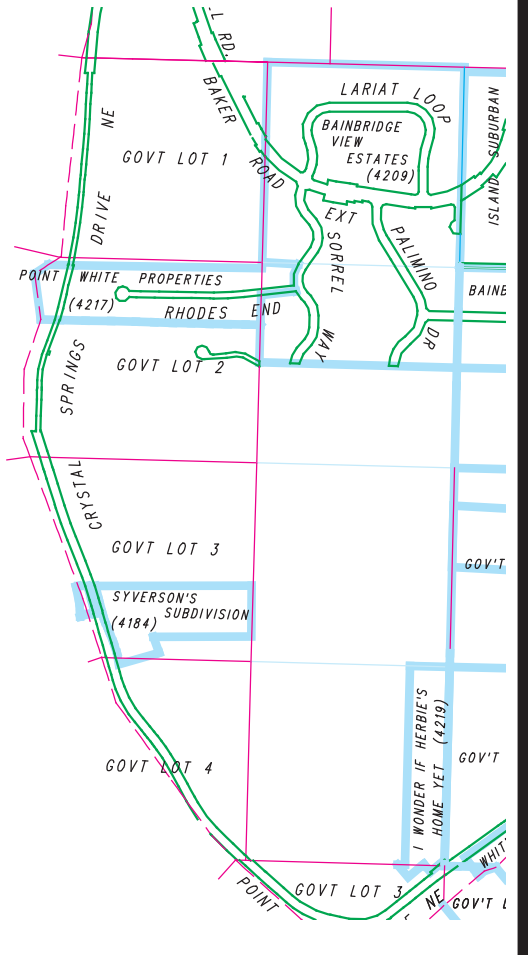




**LEGEND**

UNPLATTED TAX LOT BOUNDARY	006	UNPLATTED TAX LOT NUMBER
PLATTED TAX LOT BOUNDARY	(006-21)	AUXILIARY PLATTED LOT NUMBER
SUBDIVISION PLAT LOT BOUNDARY	012-00	PLATTED TAX LOT NUMBER
PLAT LOT BOUNDARY	(012-00)	AUXILIARY PLATTED TAX LOT NUMBER
EASEMENT BOUNDARY	4042-001	SHORT PLAT LOT IDENTIFIATOR
LIFTALLOT BOUNDARIES	4042-001	DATA BLOCK NUMBER
PLAT BOUNDARY		PLAT LOT NUMBER
ENCLOSURE		
CHUNK		
NET AREA		

This map was compiled for the Kitsap County Assessor as a record of existing tax lots, for tax assessment purposes only. It is not a survey map.



**East 1/2  
Section 05-24-2E**

Scale: 1 = 200'  
October 30, 2024

Map Number **S05E**

