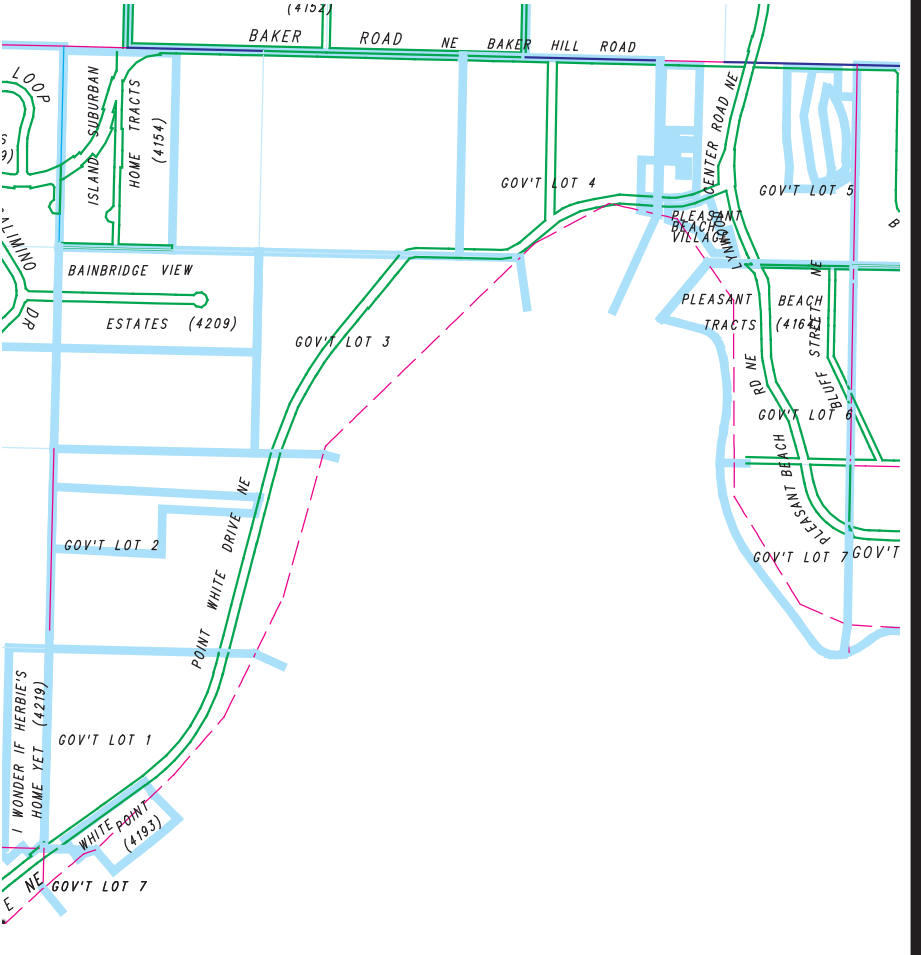


LEGEND

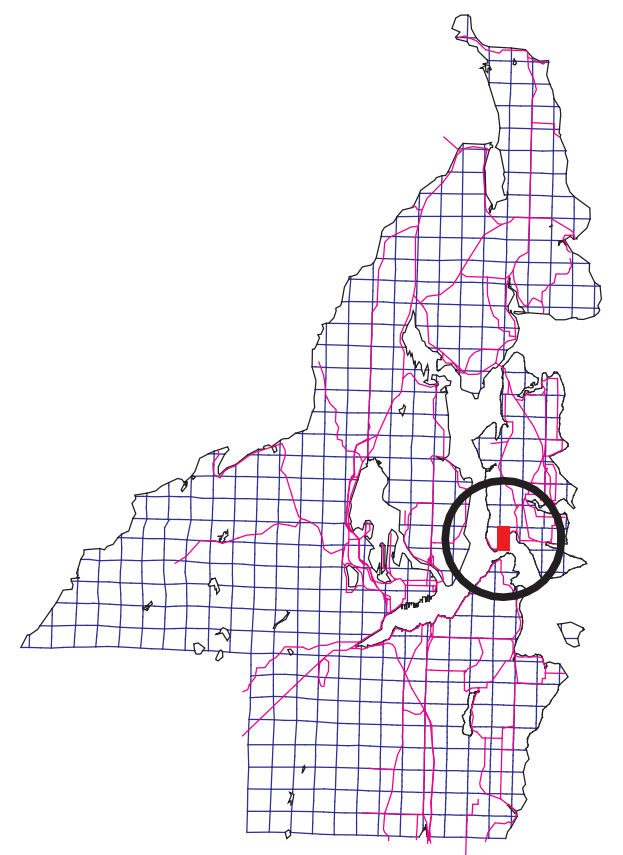
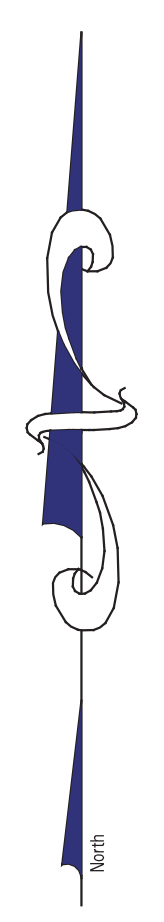
UNPLATTED TAX LOT BOUNDARY	006	UNPLATTED TAX LOT NUMBER
PLATTED TAX LOT BOUNDARY	006-21	AUXILIARY UNPLATTED LOT NUMBER
SUBDIVISION PLAT LOT BOUNDARY	012-80	PLATTED TAX LOT NUMBER
PLAT LOT BOUNDARY	012-80	AUXILIARY PLATTED TAX LOT NUMBER
EASEMENT BOUNDARY	404B-A	SHORT PLAT LOT IDENTIFIATOR
LITTONAL LOT BOUNDARIES	4042-001	SUPERSEDES
PLAT BOUNDARY		PLAT BLOCK NUMBER
POUCHLINE		PLAT LOT NUMBER
CRACK		
MET AREA		

This map was compiled for the Kitsap County Assessor as a record of existing tax lots, for tax assessment purposes only. It is not a survey map.



**West 1/2
Section 04-24-2E**

Scale: 1 = 200'
December 12, 2024
Map Number S04W



R /