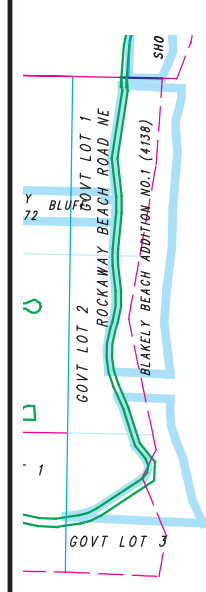


**LEGEND**

UNPLATTED TAX LOT BOUNDARY	006	UNPLATTED TAX LOT NUMBER
PLATTED TAX LOT BOUNDARY	006-21	AUXILIARY UNPLATTED LOT NUMBER
SUPERSEDED TAX LOT BOUNDARY	012-00	PLATTED TAX LOT NUMBER
PLAT LOT BOUNDARY	012-01	AUXILIARY PLATTED TAX LOT NUMBER
SUPERSEDED PLAT LOT BOUNDARY	012-02	SHORT PLAT LOT IDENTIFIATOR
EASEMENT BOUNDARY	012-03	SUPERSEDED
LIFT/LAND LOT BOUNDARIES	012-04	PLAT BLOCK NUMBER
PLAT BOUNDARY	4042-001	PLAT LOT NUMBER
POUCHLINE		
CRACK		
NET AREA		

This map was compiled for the Kitsap County Assessor as a record of existing tax lots, for tax assessment purposes only. It is not a survey map.



**West 1/2  
Section 01-24-2E**

Scale: 1 = 200'  
April 11, 2024

Map Number **S01W**

