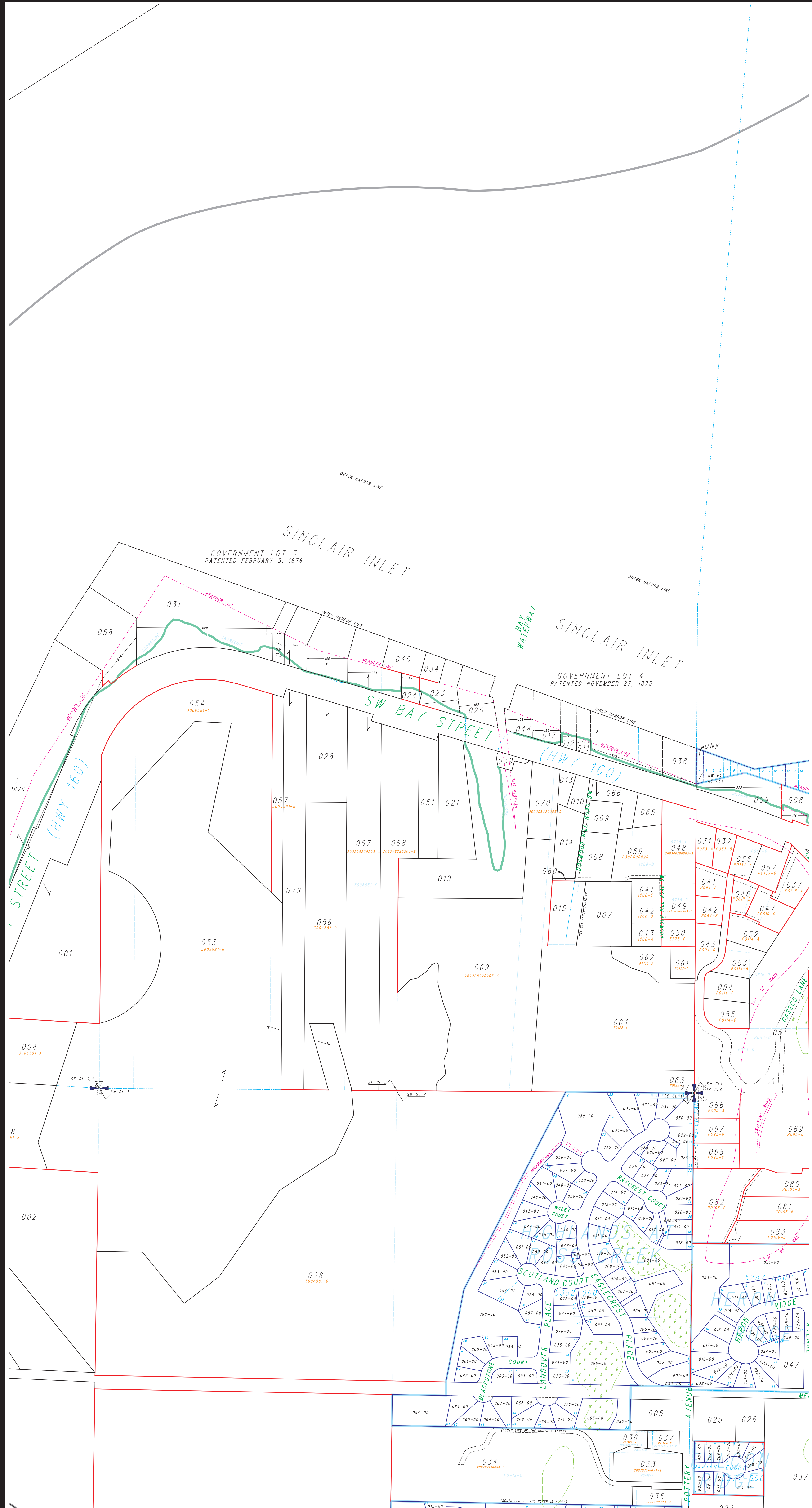
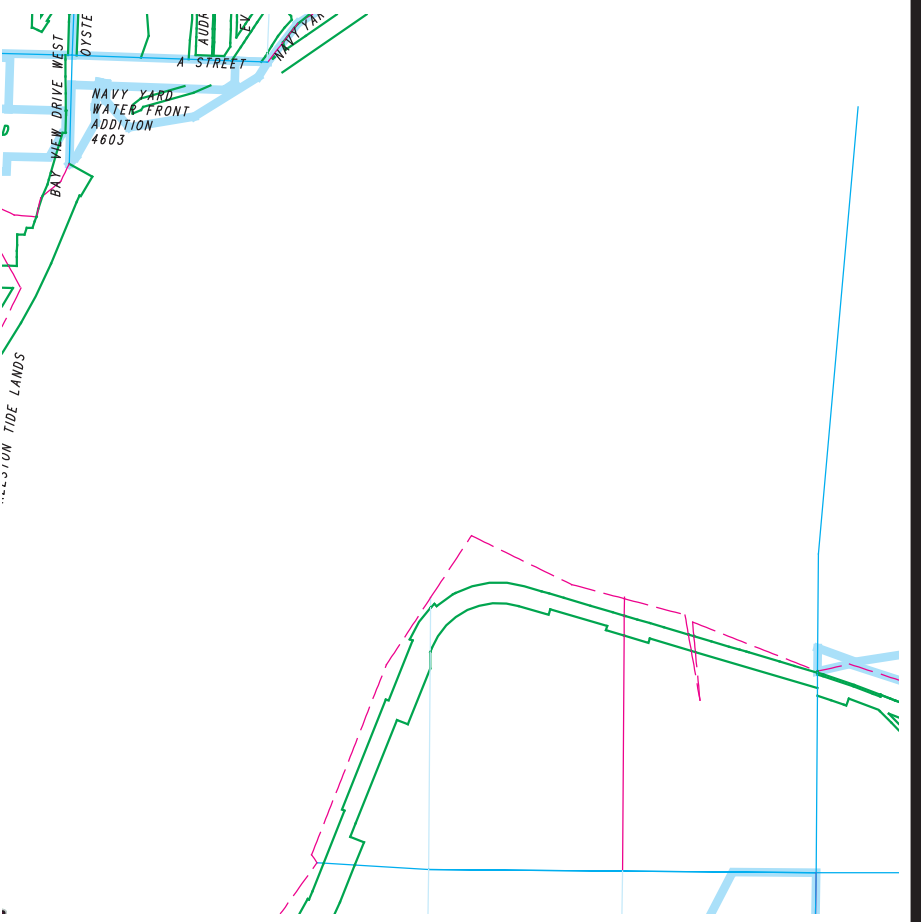


LEGEND			
	UNPLATTED TAX LOT BOUNDARY		UNPLATTED TAX LOT NUMBER
	PLATTED TAX LOT BOUNDARY		PLATTED TAX LOT NUMBER
	SUPERSEDED TAX LOT BOUNDARY		AUXILIARY UNPLATTED LOT NUMBER
	PLAT LOT BOUNDARY		AUXILIARY PLATTED TAX LOT NUMBER
	SUPERSEDED PLAT LOT BOUNDARY		SHORT PLAT LOT IDENTIFIATOR
	EASEMENT BOUNDARY		SUPERSEDED PLAT LOT NUMBER
	LITIGANT LOT BOUNDARIES		PLAT BLOCK NUMBER
	PLAT BOUNDARY		PLAT LOT NUMBER
	POUCHLINE		
	CRICK		
	MET AREA		

This map was compiled for the Kitsap County Assessor as a record of existing tax lots, for tax assessment purposes only. It is not a survey map.



## East 1/2 Section 27-24-1E

Scale: 1 = 200'  
January 13, 2025  
Map Number R27E

