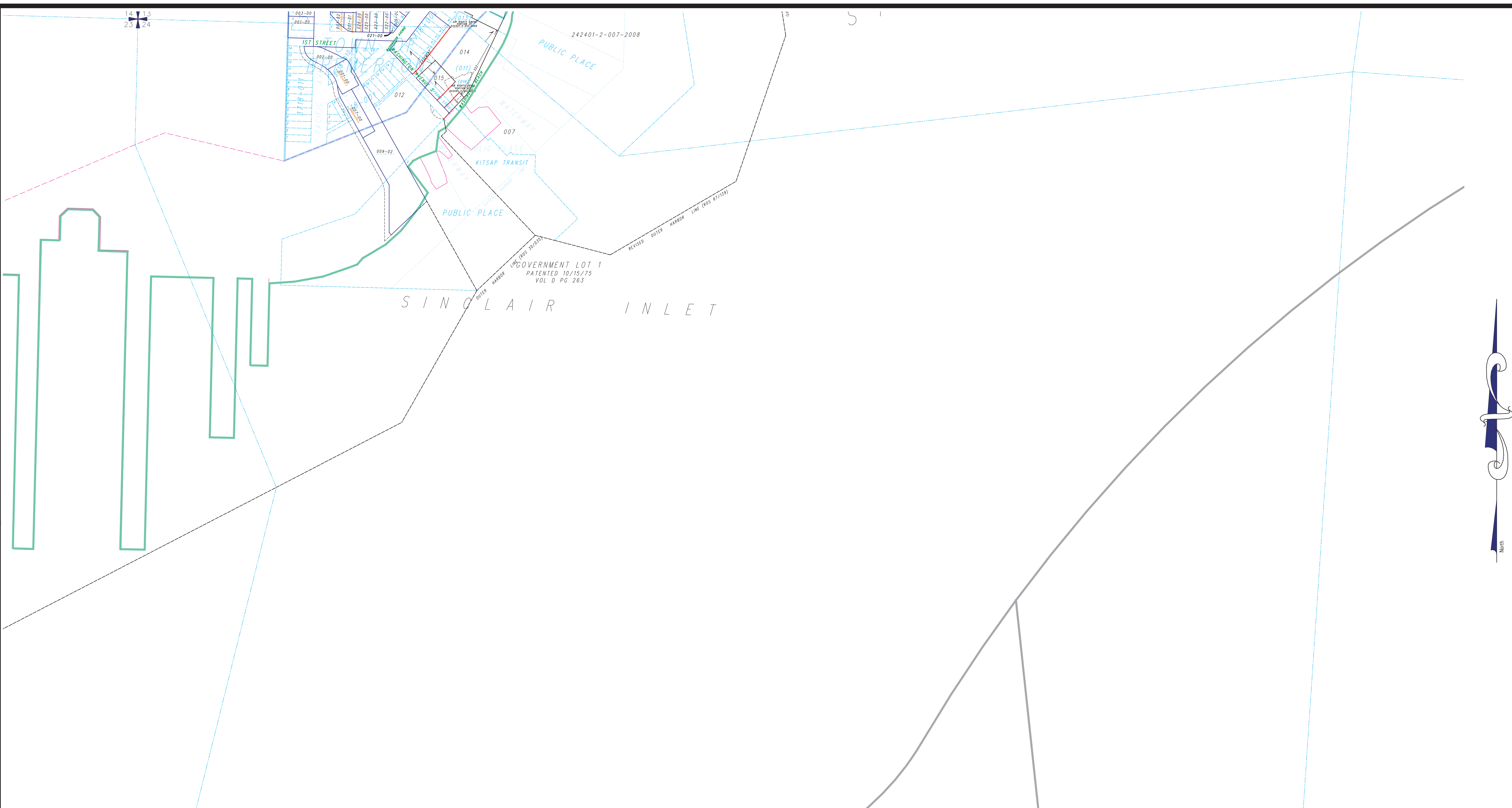


14 15
23 24



| LEGEND | |
|--------|---|
| | UNPLATTED TAX LOT BOUNDARY |
| | PLATTED TAX LOT BOUNDARY |
| | SUPPRESSED TAX LOT BOUNDARY |
| | PLAT LOT BOUNDARY |
| | SUPPRESSED PLAT LOT BOUNDARY |
| | EASEMENT BOUNDARY |
| | LITTORAL LOT BOUNDARIES |
| | PLAT BOUNDARY |
| | SHORELINE |
| | CREEK |
| | WET AREA |
| | 006 UNPLATTED TAX LOT NUMBER |
| | (006-21) AUXILIARY UNPLATTED LOT NUMBER |
| | 012-00 PLATTED TAX LOT NUMBER |
| | (012-01) AUXILIARY PLATTED TAX LOT NUMBER |
| | 418-A SHORT PLAT & LOT DESIGNATOR |
| | 418-B SUPERSEDED |
| | 4042-001 PLAT & BLOCK NUMBER |
| | 12 PLAT LOT NUMBER |

This map was compiled for the Kitsap County Assessor as a record of existing tax lots, for tax assessment purposes only. It is not a survey map.

North 1/2 Section 24-24-1E

Scale: 1 = 200'
May 16, 2023

Map Number **R24N**

