

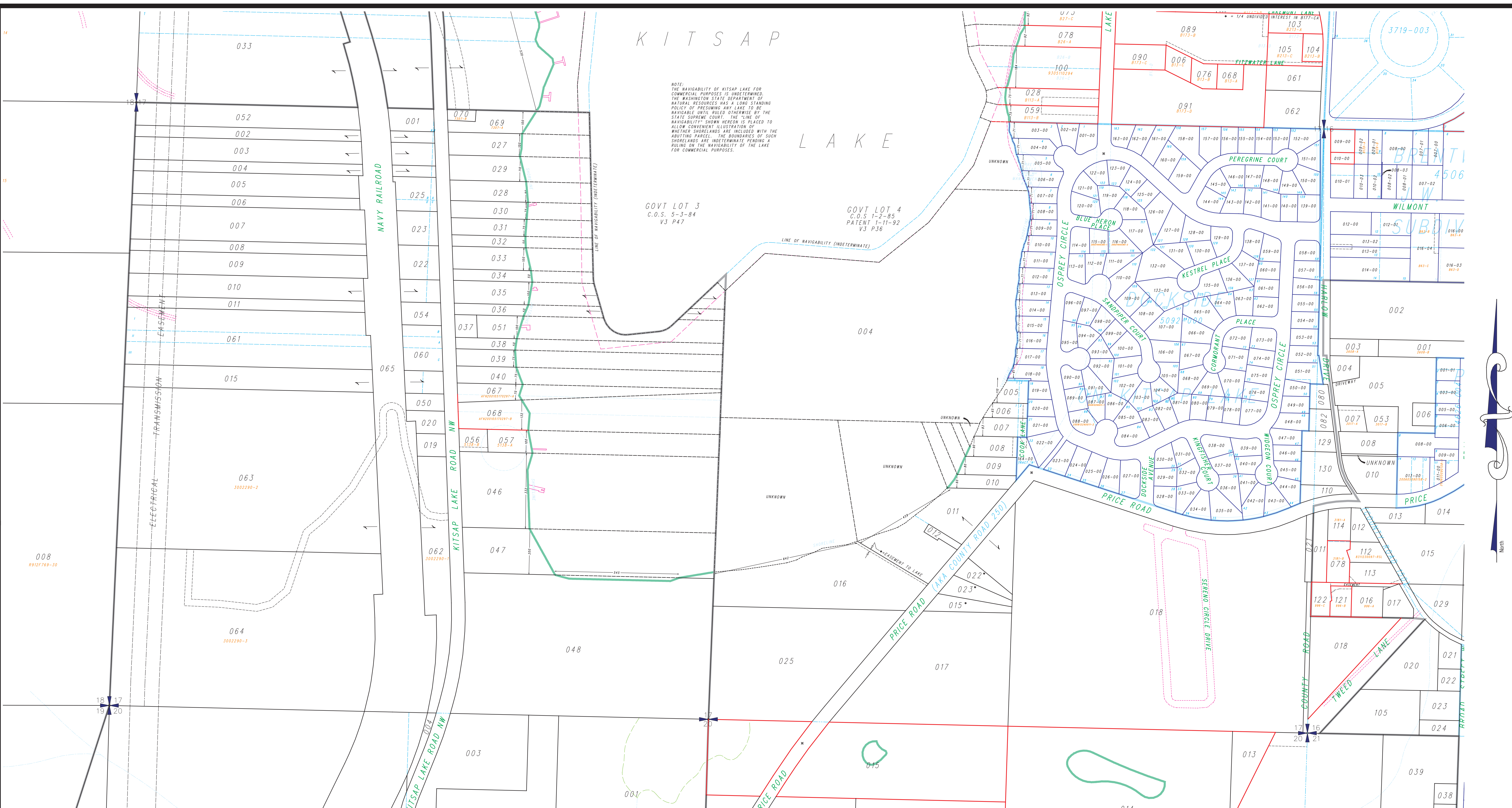
K I T S A P

L A K E

NOTE: THE NAVIGABILITY OF KITSAP LAKE FOR COMMERCIAL PURPOSES IS UNDETERMINED. THE WASHINGTON STATE DEPARTMENT OF NATURAL RESOURCES HAS A LONG STANDING POLICY OF PRESUMING ANY LAKE TO BE NAVIGABLE UNTIL RULED OTHERWISE BY THE STATE SUPREME COURT. THE "LINE OF NAVIGABILITY" SHOWN HEREIN IS PLACED TO ALLOW CONVENIENT ILLUSTRATION OF WHETHER SHORELANDS ARE INCLUDED WITH THE ADJOINING PARCEL. THE BOUNDARIES OF SUCH SHORELANDS ARE INDETERMINATE PENDING A RULING ON THE NAVIGABILITY OF THE LAKE FOR COMMERCIAL PURPOSES.

GOVT LOT 3
C.O.S. 5-3-84
V3 P47

GOVT LOT 4
C.O.S 1-2-85
PATENT 1-11-92
V3 P36



LEGEND	
	UNPLATTED TAX LOT BOUNDARY
	PLATTED TAX LOT BOUNDARY
	SUPPRESSED TAX LOT BOUNDARY
	PLAT LOT BOUNDARY
	SUPPRESSED PLAT LOT BOUNDARY
	EASEMENT BOUNDARY
	LITTORAL LOT BOUNDARIES
	PLAT BOUNDARY SHORELINES
	CREEK
	WET AREA
	UNPLATTED TAX LOT NUMBER
	AUXILIARY UNPLATTED LOT NUMBER
	PLATTED TAX LOT NUMBER
	AUXILIARY PLATTED TAX LOT NUMBER
	SHORT PLAT & LOT DESIGNATOR
	SUPPRESSED
	PLAT & BLOCK NUMBER
	PLAT LOT NUMBER

This map was compiled for the Kitsap County Assessor as a record of existing tax lots, for tax assessment purposes only. It is not a survey map.

South 1/2 Section 17-24-1E

Scale: 1 = 200'
May 15, 2023

Map Number R17S

