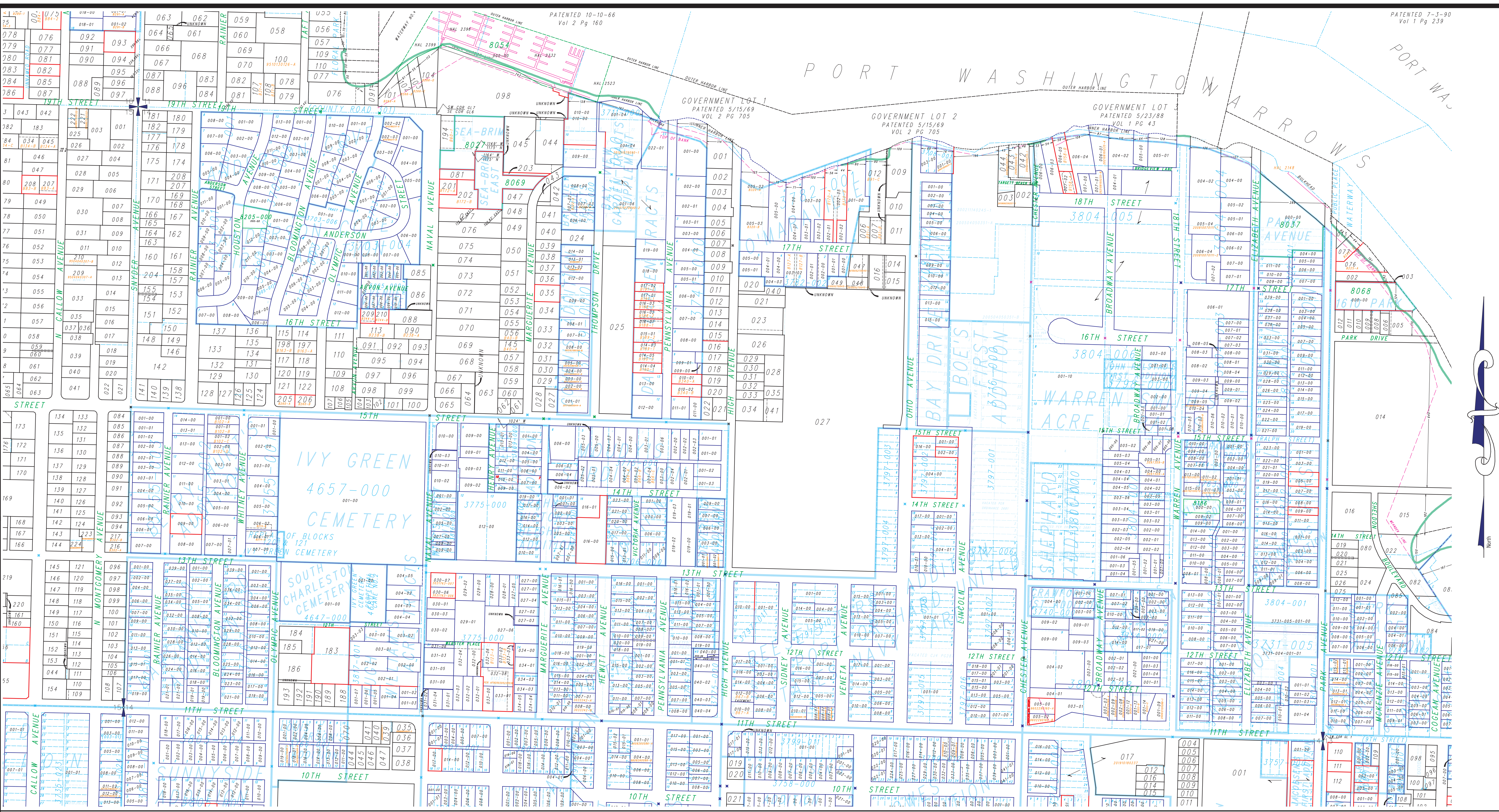


PORT WASHINGTON ARROWS



LEGEND	
	UNPLATTED TAX LOT BOUNDARY
	PLATTED TAX LOT BOUNDARY
	SUBDIVIDED TAX LOT BOUNDARY
	PLAT LOT BOUNDARY
	SUPERSEDED PLAT LOT BOUNDARY
	AUXILIARY PLATTED TAX LOT BOUNDARY
	FACTORY BOUNDARY
	LITTORAL LOT BOUNDARIES
	PLAT BOUNDARY
	SHORELINE
	CREEK
	WETAREA
	006 UNPLATTED TAX LOT NUMBER
	(006-21) AUXILIARY UNPLATTED LOT NUMBER
	012-00 PLATTED TAX LOT NUMBER
	(012-01) AUXILIARY PLATTED TAX LOT NUMBER
	418-A SHORT PLAT & LOT DESIGNATOR (SUPERSEDED)
	4042-001 PLAT & BLOCK NUMBER
	PLAT LOT NUMBER

This map was compiled for the Kitsap County Assessor as a record of existing tax lots, for tax assessment purposes only. It is not a survey map.

North 1/2 Section 14-24-1E

Scale: 1 = 200'
February 10, 2025

Map Number **R14N**

